



# Autism Advisory Team



## Lesley Botchway

**Autism Team Coordinator and Secondary Advisor**

[Lesley.Botchway@westberks.gov.uk](mailto:Lesley.Botchway@westberks.gov.uk)

The work may include

- Providing support and guidance for staff working with autistic pupils
- Providing training and development for staff, delivered centrally and also in schools
- Undertaking observation of pupils within their setting
- Providing written reports and information
- Support in developing self-help strategies for pupils and also for staff

## Sue Granger

**Autism Advisor for Primary**

[Sue.Granger1@westberks.gov.uk](mailto:Sue.Granger1@westberks.gov.uk)

Autism Advisor for Primary offers:

- Advice and guidance for staff
- Central and in-house training and development opportunities for staff
- Observations of autistic pupils in class to better understand their school experience
- Support in developing support strategies for pupils, reducing their stress and calming anxiety
- Written reports and guidance



## Kelly Evans

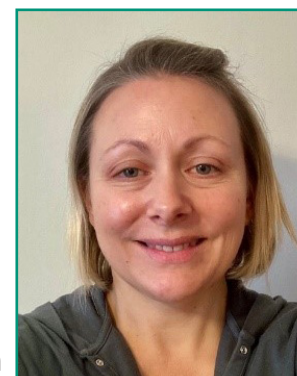
**Autism Advisor for Families**

[Kelly.Evans1@westberks.gov.uk](mailto:Kelly.Evans1@westberks.gov.uk)

Autism Advisor for families offers:

Support for families and carers post Autistic Spectrum Diagnosis by:

- Listening to parents concerns and answering questions
- Providing guidance and information for families
- Sign posting to other services and voluntary organisations
- Managing and delivering training programmes for parents



## Gilly Rogers

**Autism Specialist Teaching Assistant**

[Gilly.Rogers1@westberks.gov.uk](mailto:Gilly.Rogers1@westberks.gov.uk)

- ELSA trained. Provides individual support to autistic pupils with anxiety and emotional regulation concerns that is impacting on their wellbeing and learning
- Supports school staff with strategies to support autistic pupils in the school environment
- Supports the families of the pupils with whom individual sessions are taking place
- Liaise with pupils and families, and schools to support communication and strengthen relationships
- Supports training sessions conducted by Autism Team for families and professionals



## Lizzie Stratford

**Autism Specialist Teaching Assistant**

[Lizzie.stratford1@westberks.gov.uk](mailto:Lizzie.stratford1@westberks.gov.uk)

- TEACCH trained. Provides individual support to autistic pupils to access curriculum with visual supports and adaptation of the environment.
- Provides individual support to autistic pupils using visual supports and adaptation to learning environment to facilitate access to the curriculum.??
- Supports school staff with strategies to support autistic pupils in the school environment
- Supports the families of the pupils with whom individual sessions are taking place
- Liaise with pupils and families, and schools to support communication and strengthen relationships



The Autism Spectrum Advisory Service supports Local Authority mainstream schools and academies in managing the learning, behaviour and social skills needs of pupils on the Autistic Spectrum. The team make visits to schools, provide central training and also school based training. The service visits to school are free, including visits to deliver training in a school.

**Contact: Learning support - [LearningSupportTeam@westberks.gov.uk](mailto:LearningSupportTeam@westberks.gov.uk) Telephone number: 01635 503 646**